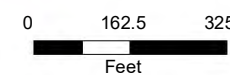


Service Layer Credits: "March 2021
 Photography flown by the Sanborn Map
 Company, Colorado Springs, CO." "Digital
 Orthophotography compiled by Sanborn Map
 Company, Colorado Springs, CO"
 Sources: Esri, HERE, Garmin, Intermap,
 increment P Corp., GEBCO, USGS, FAO,

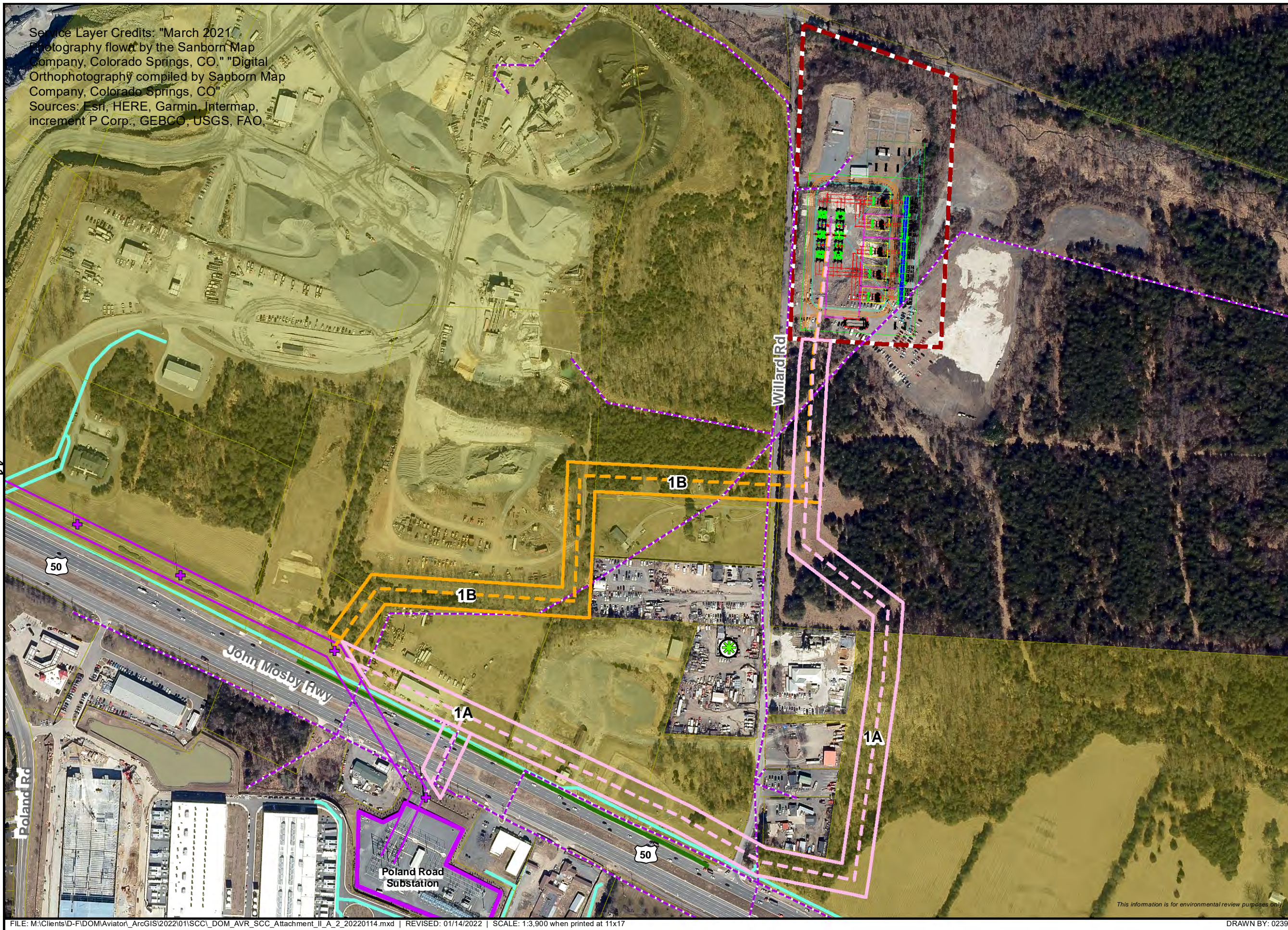
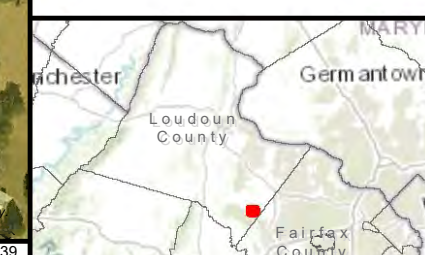


Attachment II.A.2 Transmission Line Route Alternatives Aviator 230 kV Line Loop and Aviator Substation Loudoun County, Virginia

- Proposed Route
- Overhead Route 1A
(0.90 Miles - 100 ft ROW)
- Alternative Route
- Overhead Route 1B
(0.58 Miles - 100 ft ROW)
- Proposed Aviator Substation
(Approximately 12.48 Acres)
- Telecommunication Tower
- Loudoun Water Line
- Natural Gas Pipeline
- Parcel Boundary
- Chantilly Crushed Stone Property
- Existing Dominion Infrastructure**
- Transmission Structure
- Transmission Line
- Distribution Line
- Poland Road Substation



1:3,900



4.1

This information is for environmental review purposes only.

Attachment II.A.2