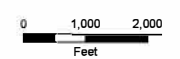




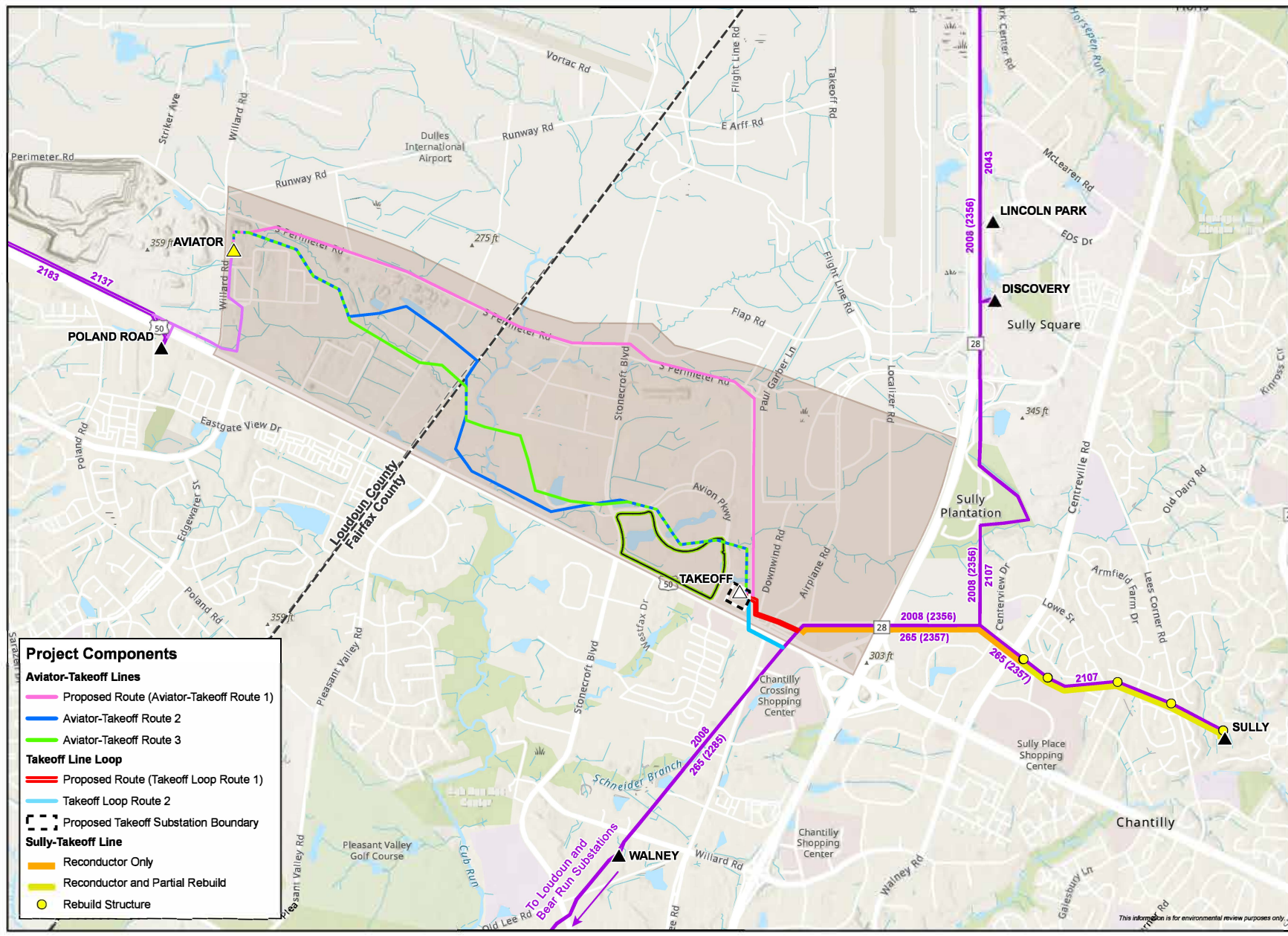
Attachment I.A.1 Project Overview and Aviator Load Area

**230 kV Rebuild,
Reconductoring,
and New Line Projects to
Network Takeoff Substation**
Fairfax and Loudoun Counties,
Virginia

- Aviator Load Area
- Customer Data Center
- Existing Substation
- Future Substation
- Proposed Substation
- Future Dominion Transmission Line
- Existing Dominion Transmission Line Labeled with Current (Future) Number
- County Boundary



1:24,000



- #### Project Components
- Aviator-Takeoff Lines**
- Proposed Route (Aviator-Takeoff Route 1)
 - Aviator-Takeoff Route 2
 - Aviator-Takeoff Route 3
- Takeoff Line Loop**
- Proposed Route (Takeoff Loop Route 1)
 - Takeoff Loop Route 2
- Proposed Takeoff Substation Boundary
- Sully-Takeoff Line**
- Reconductor Only
 - Reconductor and Partial Rebuild
 - Rebuild Structure

This information is for environmental review purposes only.